

An architectural rendering of a modern multi-story building, Terrace Clinics Plaza, at dusk. The building features a mix of dark grey panels, large glass windows, and vertical wooden slats. Some upper floors have glass railings and rooftop gardens. The ground floor is a commercial plaza with storefronts for 'STAR SPORTS', 'SUBSIDE', and 'WORTHBRIDGE'. A large white text overlay reads 'Terrace Clinics' in the top right and 'TERRACE PLAZA' in the center. A small golden winged figure flies in the sky above the building.

Terrace  
*Clinics*

TERRACE  
PLAZA



# Welcome to Terrace Clinics

The plaza spans over 14766 m<sup>2</sup> making area for all commercial and medical aspects. terrace plaza offers various amenities, whether it's dining or shopping with top notch brands and comfort. Furthermore, the plaza constitutes a vast majority of state-of-the-art clinics specialized for any type of treatment or service. The community can get all their needs fulfilled through the well-equipped Terrace Plaza with high-end facilities and services.

# Enjoy your Terrace

Housing and Development Bank has been around the real estate business for more than 4 decades striving for excellence in the banking, housing, and real estate sectors. Its newest affiliate “Housing and Development Properties” introduce you its first and most developed Earth first community “Terrace”.

Terrace, a strategically planned 150,000 square meter community, is situated in the heart of Sheikh Zayed. It is a pleasant integration of urban architecture and nature designed by the award winning YBA .... Terrace is a blend of residential, commercial, and recreational facilities that ensure high standards of living for its residents.

Terrace's products are designed to accommodate modernity, luxury, safety and sustainability, all in its close knit area.

# Location

- Inner lanes
- Facilities and amenities
- Main roads
- Our location



Terrace plaza is located on the edge of Terrace Zayed which is centrally located amidst Sheikh Zayed in the Greater Cairo urban area. It is surrounded by well developed roads overlooking 26th of July Corridor and Waslet Dahshour. Commercial, educational, and medical facilities are just a walk away from the compound. Terrace is a gated community in a developed urban area. its prime location and design are meticulously planned to provide its residents a sub urban feeling in an urban environment.

# Terrace Plaza

(Retail & Clinics )

(Retail & Offices)

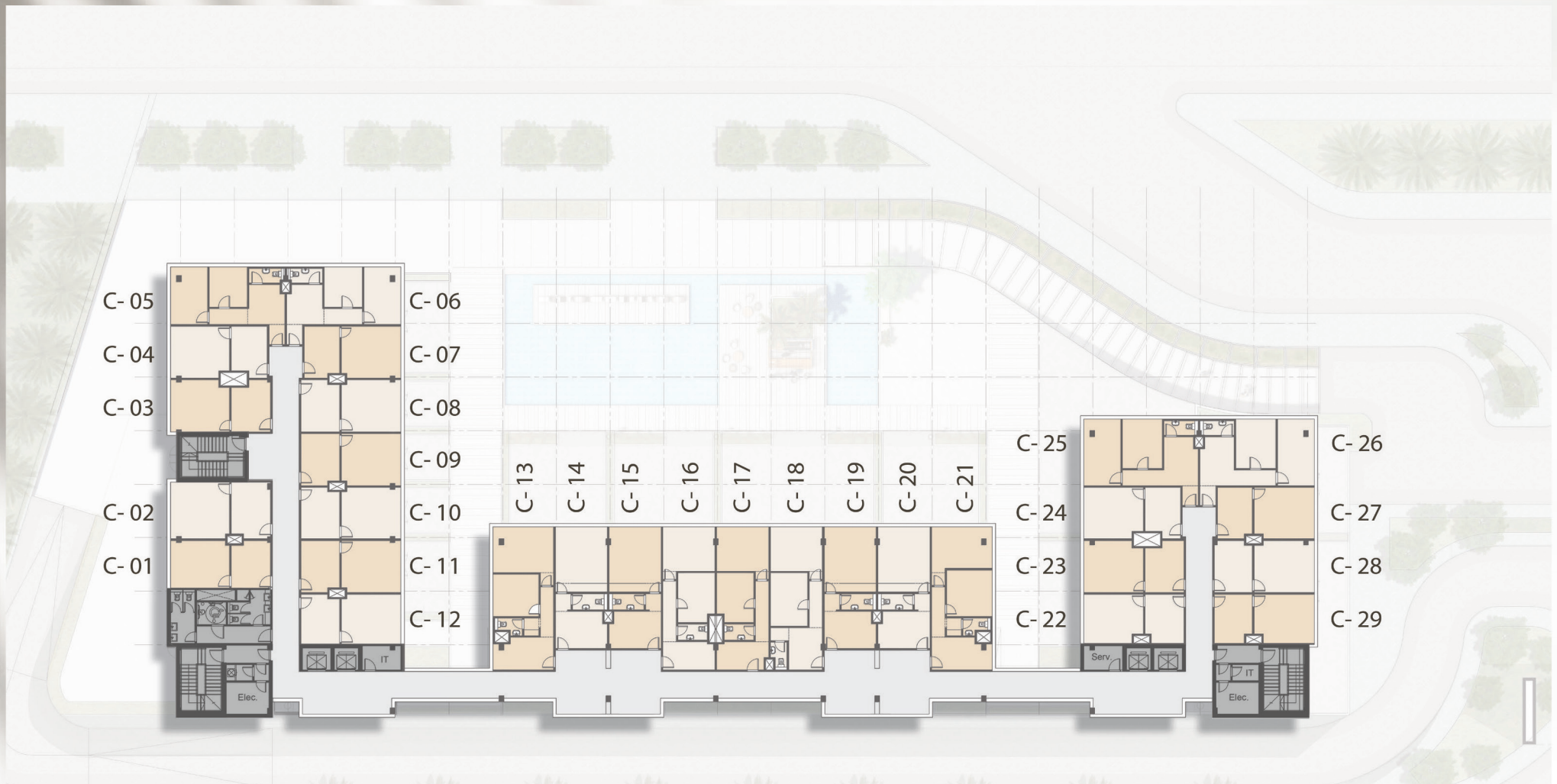
(Mixed use)





# ARCHITECTURE PLANS

## Typical floor



The background is a solid light brown color. It features two large, dark brown triangles pointing upwards. The triangle on the left is larger and has a textured, slightly grainy surface. The triangle on the right is smaller and has a smoother surface. A thin, white horizontal line runs across the middle of the image, passing behind the text.

# ARCHITECTURE CHARACTER

























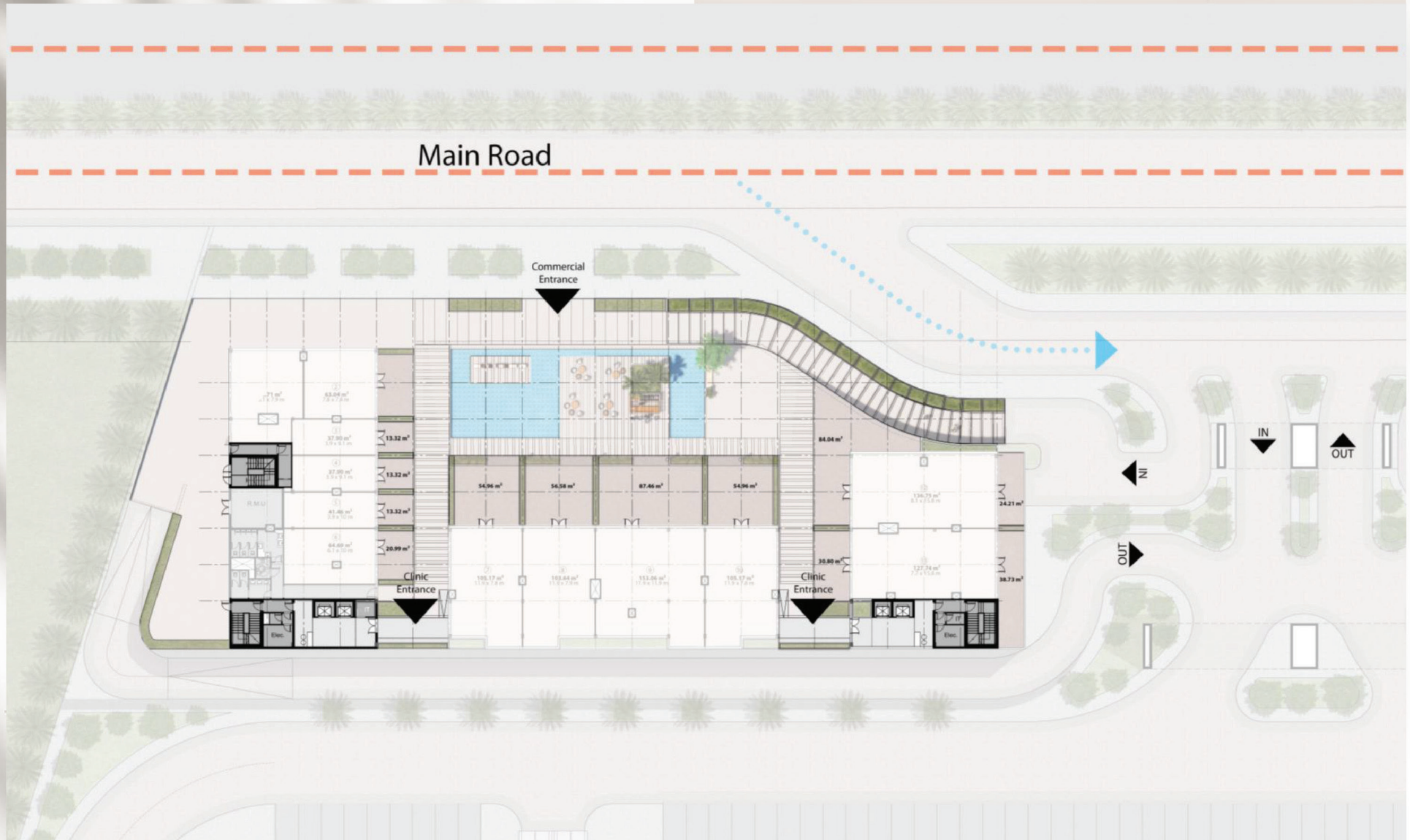








## Ground Floor

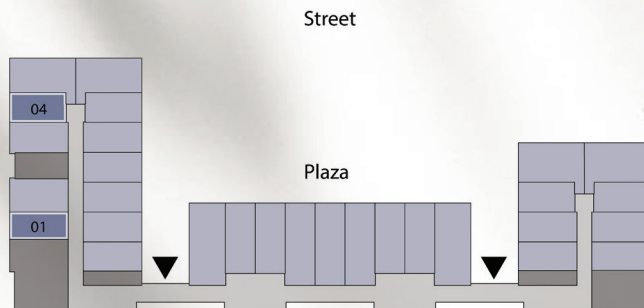
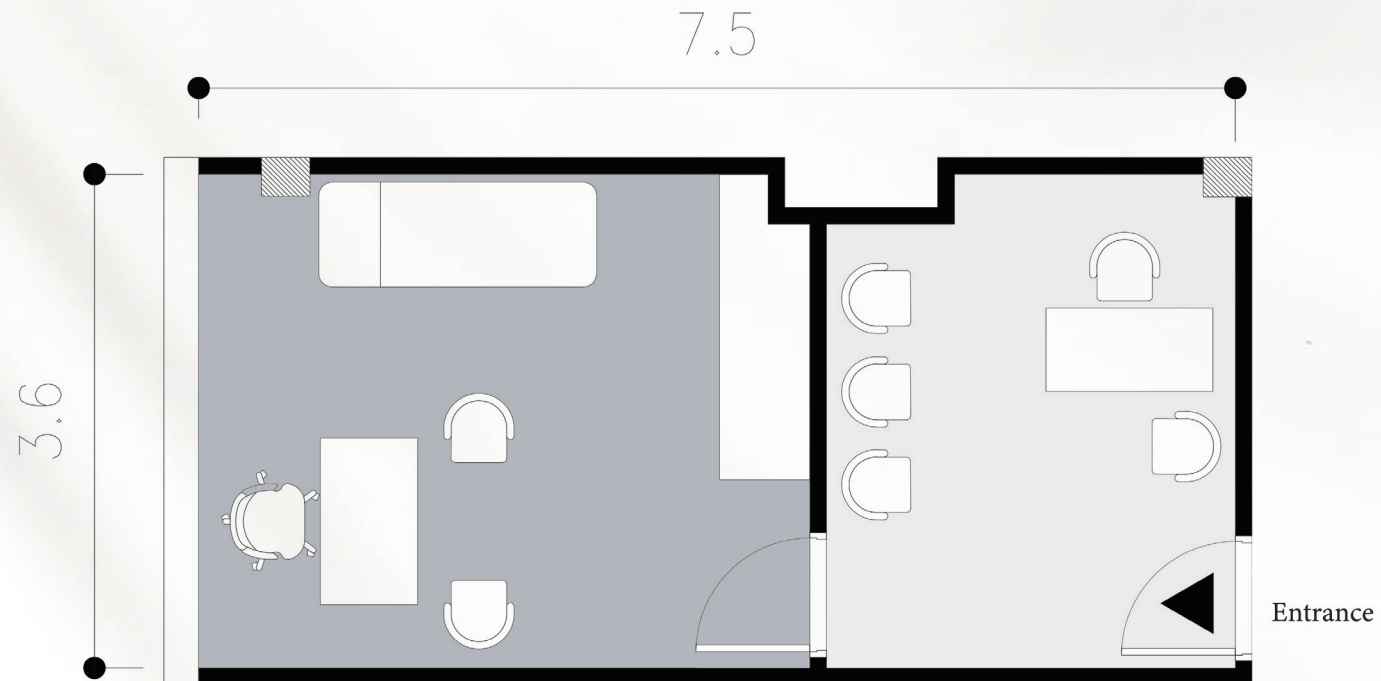


# FURNISHED PLANS \ TYPES

# Terrace Clinics

Units :  
101-104-201-204

Area = 41 m<sup>2</sup> - 43 m<sup>2</sup>



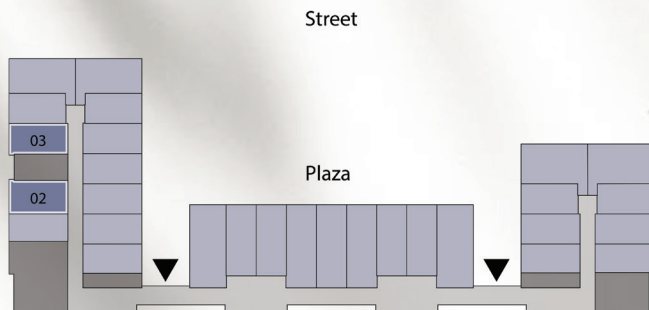
## Disclaimer:

1. All Unit dimensions are measured internally and exclude wall finishes and construction tolerance.
2. All Material, dimensions, drawings and interior designs are approximate and information is subject to change without notice according to the consultant's vision.
3. Actual area may vary from the stated area within 5% margin.
4. Drawings are not to scale.
5. The developer reserves the right to make revisions, add additional floors, change elevation details.
6. The unit orientation is shown in the floor plan.

# Terrace Clinics

Units :  
102-103-202-203

Area = 46 m<sup>2</sup> - 50 m<sup>2</sup>



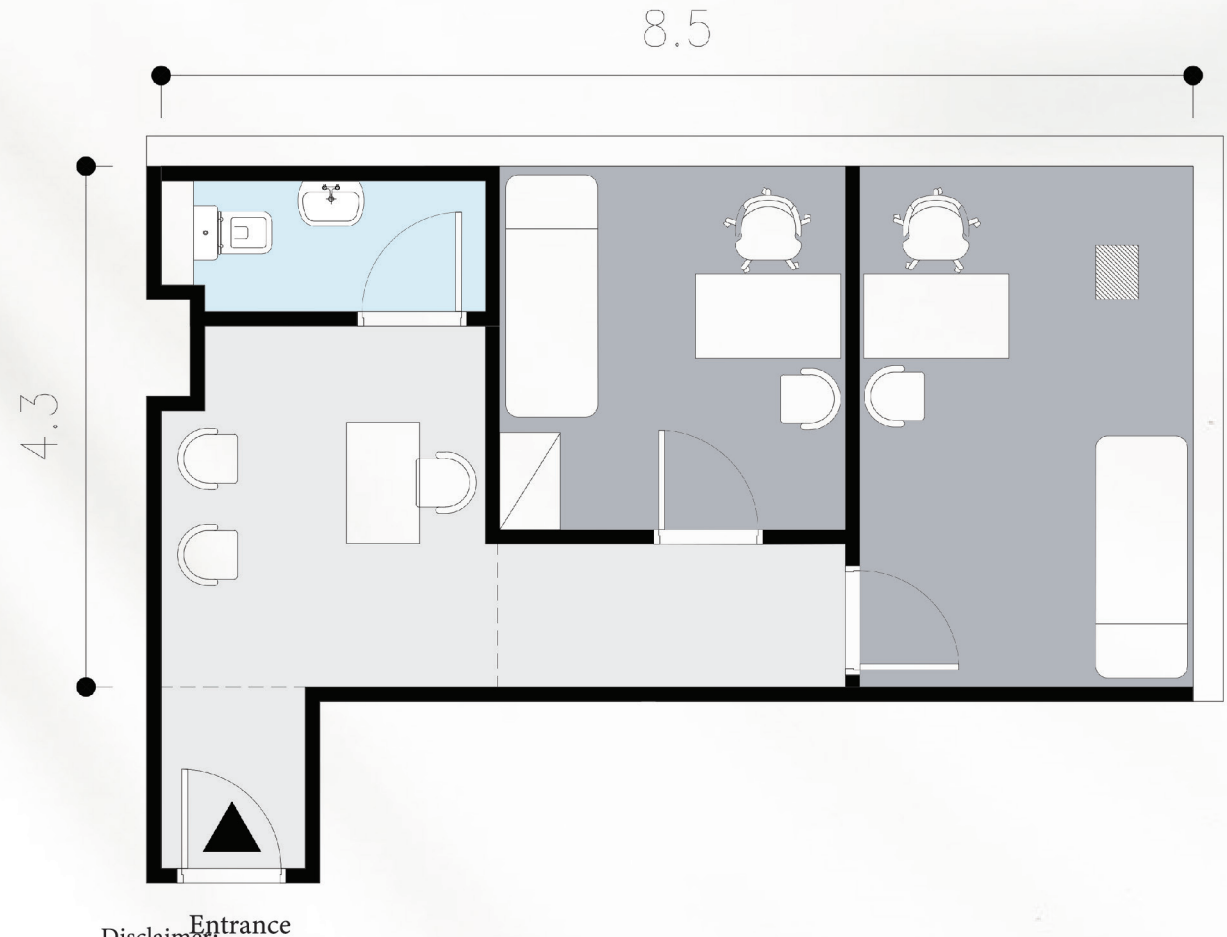
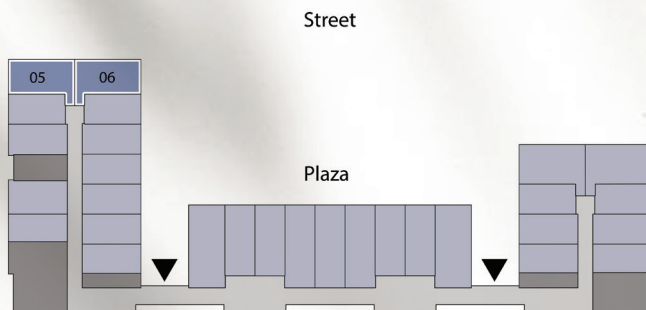
## Disclaimer:

1. All Unit dimensions are measured internally and exclude wall finishes and construction tolerance.
2. All Material, dimensions, drawings and interior designs are approximate and information is subject to change without notice according to the consultant's vision.
3. Actual area may vary from the stated area within 5% margin.
4. Drawings are not to scale.
5. The developer reserves the right to make revisions, add additional floors, change elevation details.
6. The unit orientation is shown in the floor plan.

# Terrace Clinics

Units :  
105-106-205-206

Area = 60 m<sup>2</sup>



Entrance

Disclaimer:

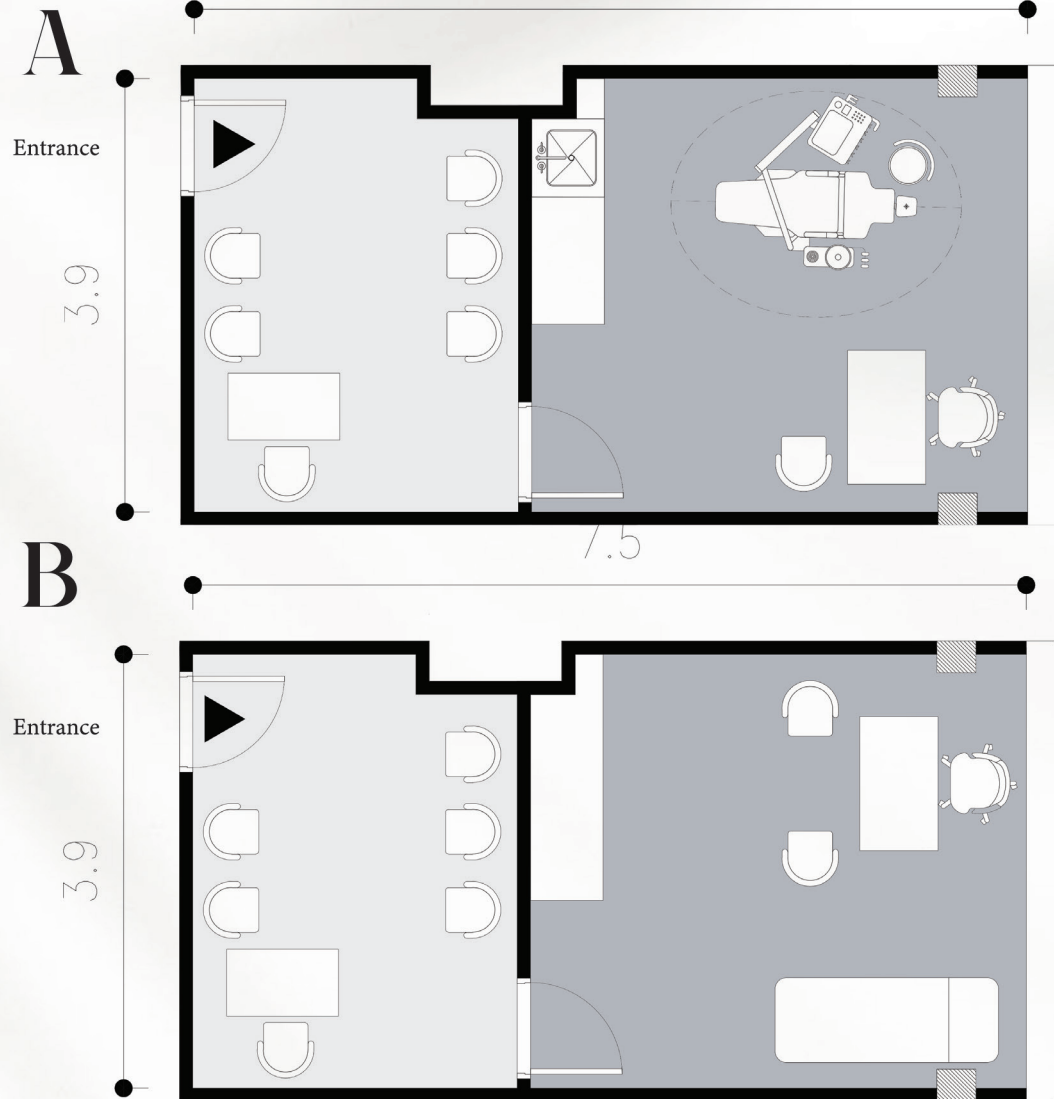
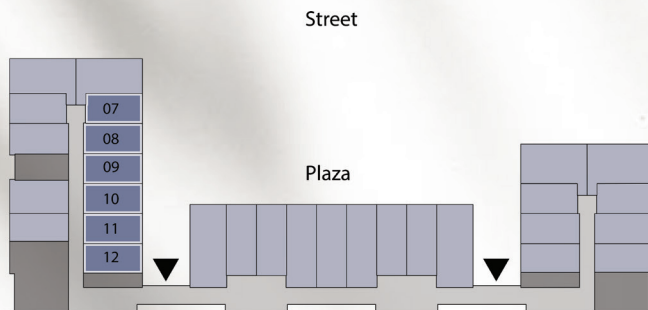
1. All Unit dimensions are measured internally and exclude wall finishes and construction tolerance.
2. All Material, dimensions, drawings and interior designs are approximate and information is subject to change without notice according to the consultant's vision.
3. Actual area may vary from the stated area within 5% margin.
4. Drawings are not to scale.
5. The developer reserves the right to make revisions, add additional floors, change elevation details.
6. The unit orientation is shown in the floor plan.

# Terrace Clinics

Units :

107-108-109-110-111-112-207  
-208-209-210-211-212

Area = 43 m<sup>2</sup> - 44 m<sup>2</sup>



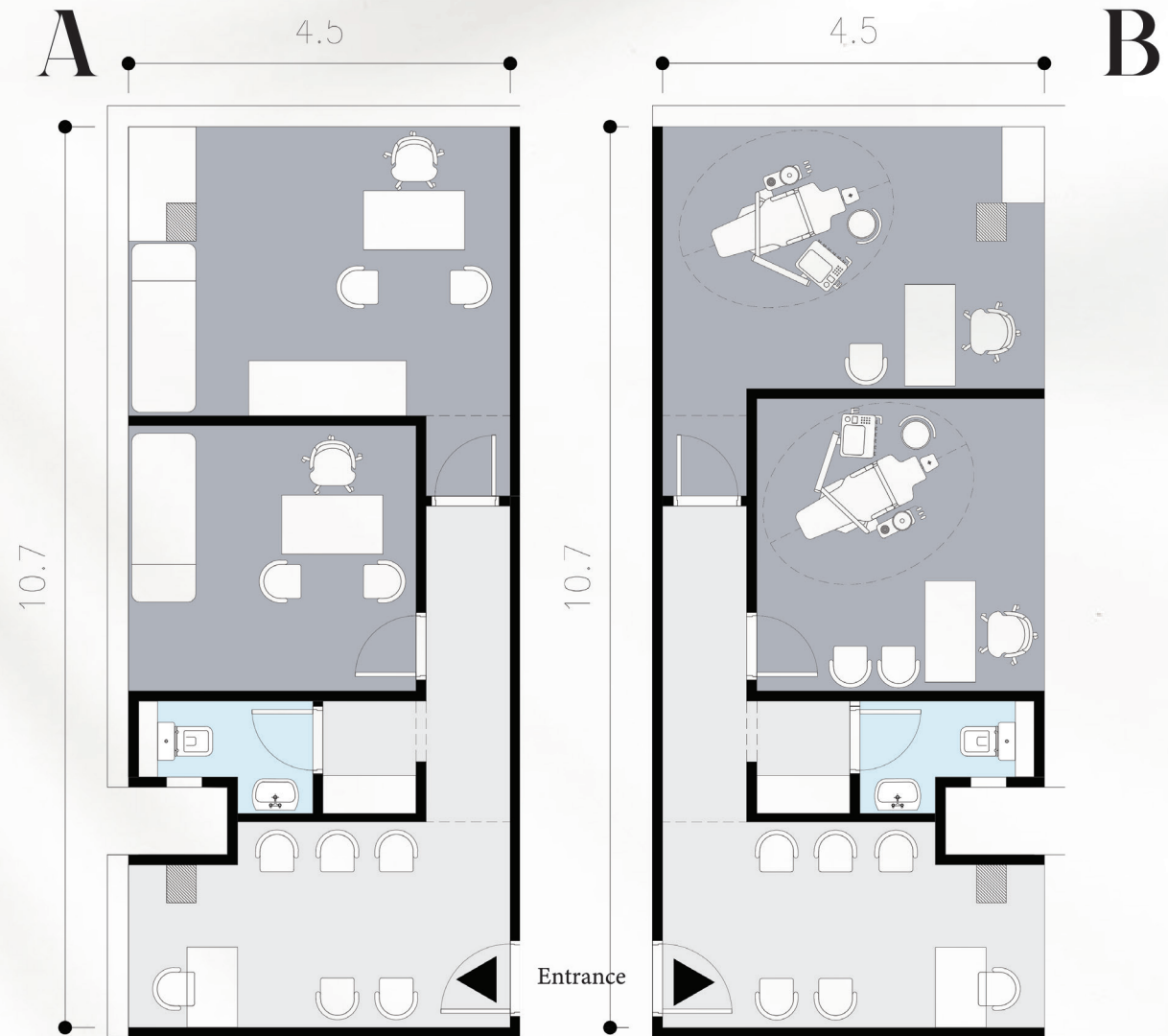
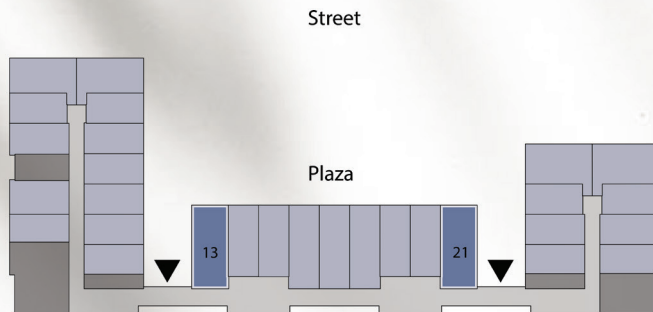
## Disclaimer:

1. All Unit dimensions are measured internally and exclude wall finishes and construction tolerance.
2. All Material, dimensions, drawings and interior designs are approximate and information is subject to change without notice according to the consultant's vision.
3. Actual area may vary from the stated area within 5% margin.
4. Drawings are not to scale.
5. The developer reserves the right to make revisions, add additional floors, change elevation details.
6. The unit orientation is shown in the floor plan.

# Terrace Clinics

Units :  
113-121-213-221

Area = 75 m<sup>2</sup>



## Disclaimer:

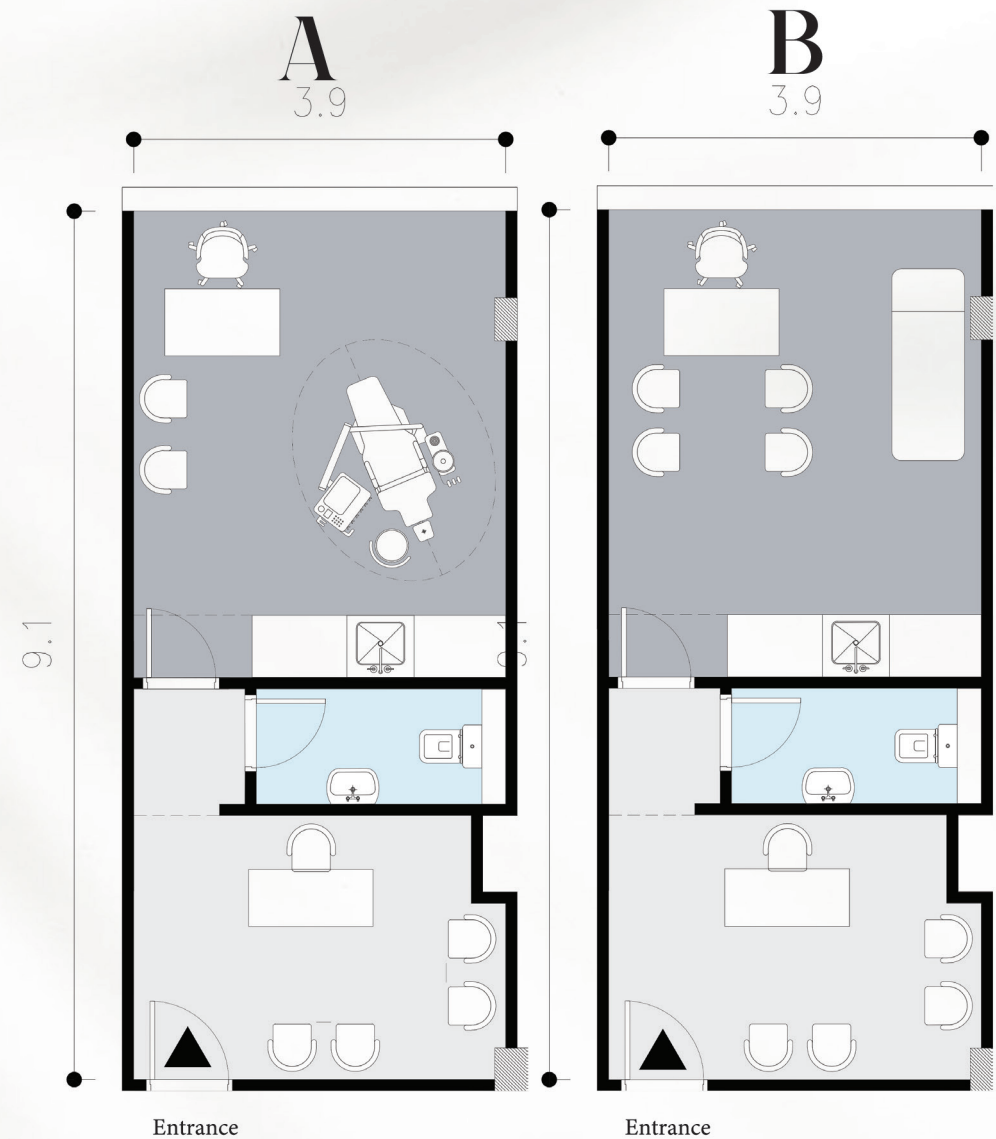
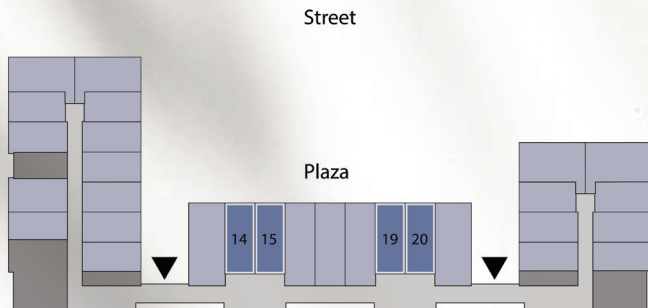
1. All Unit dimensions are measured internally and exclude wall finishes and construction tolerance.
2. All Material, dimensions, drawings and interior designs are approximate and information is subject to change without notice according to the consultant's vision.
3. Actual area may vary from the stated area within 5% margin.
4. Drawings are not to scale.
5. The developer reserves the right to make revisions, add additional floors, change elevation details.
6. The unit orientation is shown in the floor plan.

# Terrace Clinics

Units :

114-115-119-120-214-215-219-220

Area = 53 m<sup>2</sup>



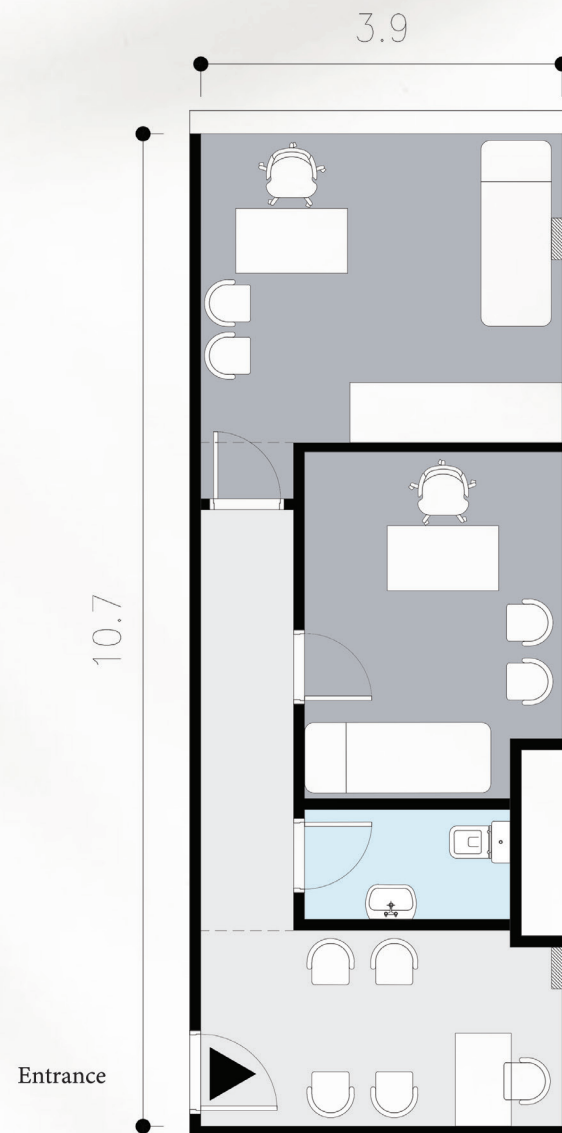
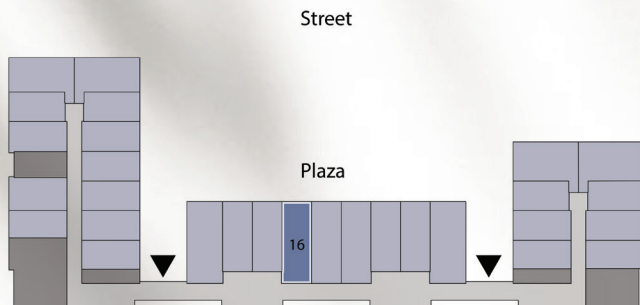
## Disclaimer:

1. All Unit dimensions are measured internally and exclude wall finishes and construction tolerance.
2. All Material, dimensions, drawings and interior designs are approximate and information is subject to change without notice according to the consultant's vision.
3. Actual area may vary from the stated area within 5% margin.
4. Drawings are not to scale.
5. The developer reserves the right to make revisions, add additional floors, change elevation details.
6. The unit orientation is shown in the floor plan.

# Terrace Clinics

Units :  
116-216

Area = 62 m<sup>2</sup>



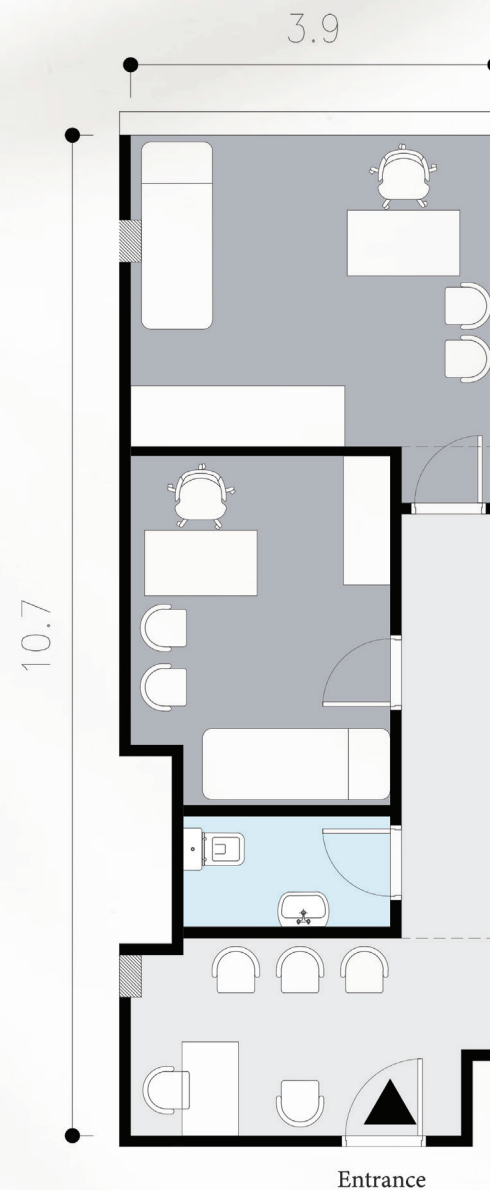
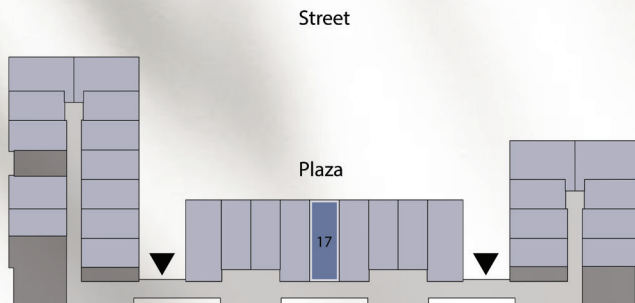
## Disclaimer:

1. All Unit dimensions are measured internally and exclude wall finishes and construction tolerance.
2. All Material, dimensions, drawings and interior designs are approximate and information is subject to change without notice according to the consultant's vision.
3. Actual area may vary from the stated area within 5% margin.
4. Drawings are not to scale.
5. The developer reserves the right to make revisions, add additional floors, change elevation details.
6. The unit orientation is shown in the floor plan.

# Terrace Clinics

Units :  
117-217

Area = 62 m<sup>2</sup>



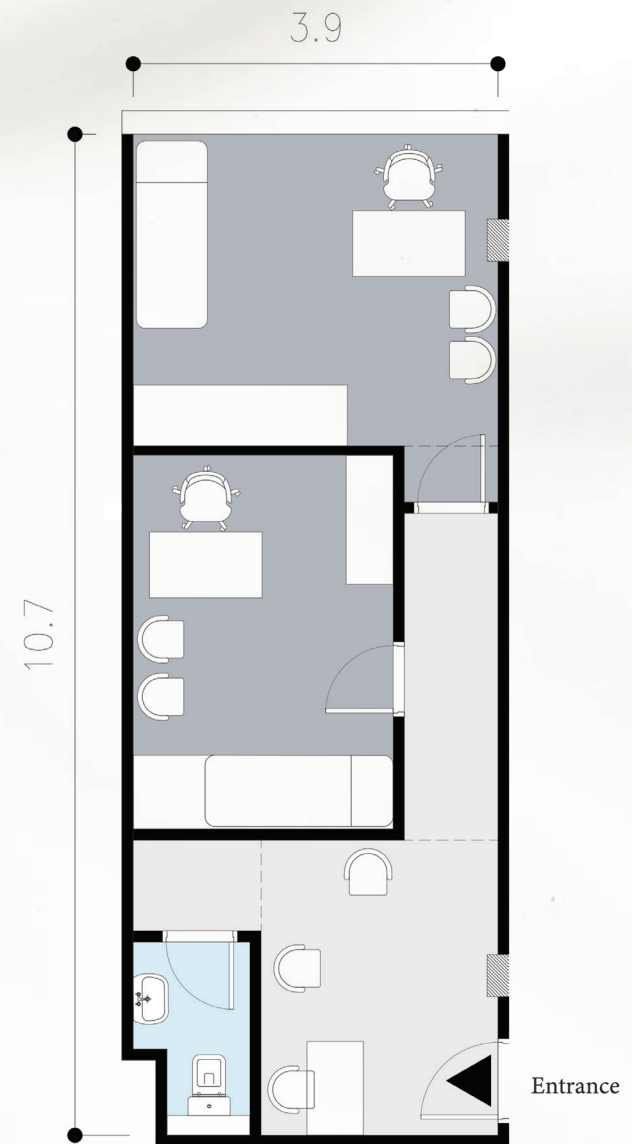
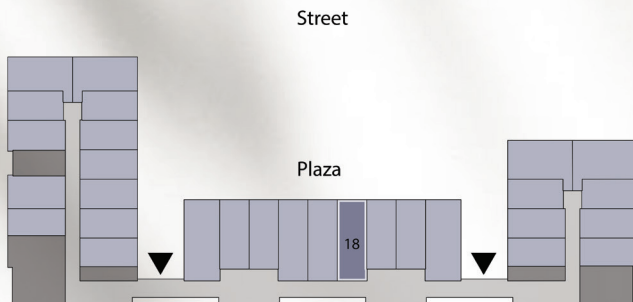
## Disclaimer:

1. All Unit dimensions are measured internally and exclude wall finishes and construction tolerance.
2. All Material, dimensions, drawings and interior designs are approximate and information is subject to change without notice according to the consultant's vision.
3. Actual area may vary from the stated area within 5% margin.
4. Drawings are not to scale.
5. The developer reserves the right to make revisions, add additional floors, change elevation details.
6. The unit orientation is shown in the floor plan.

# Terrace Clinics

Units :  
118-218

Area = 62 m<sup>2</sup>



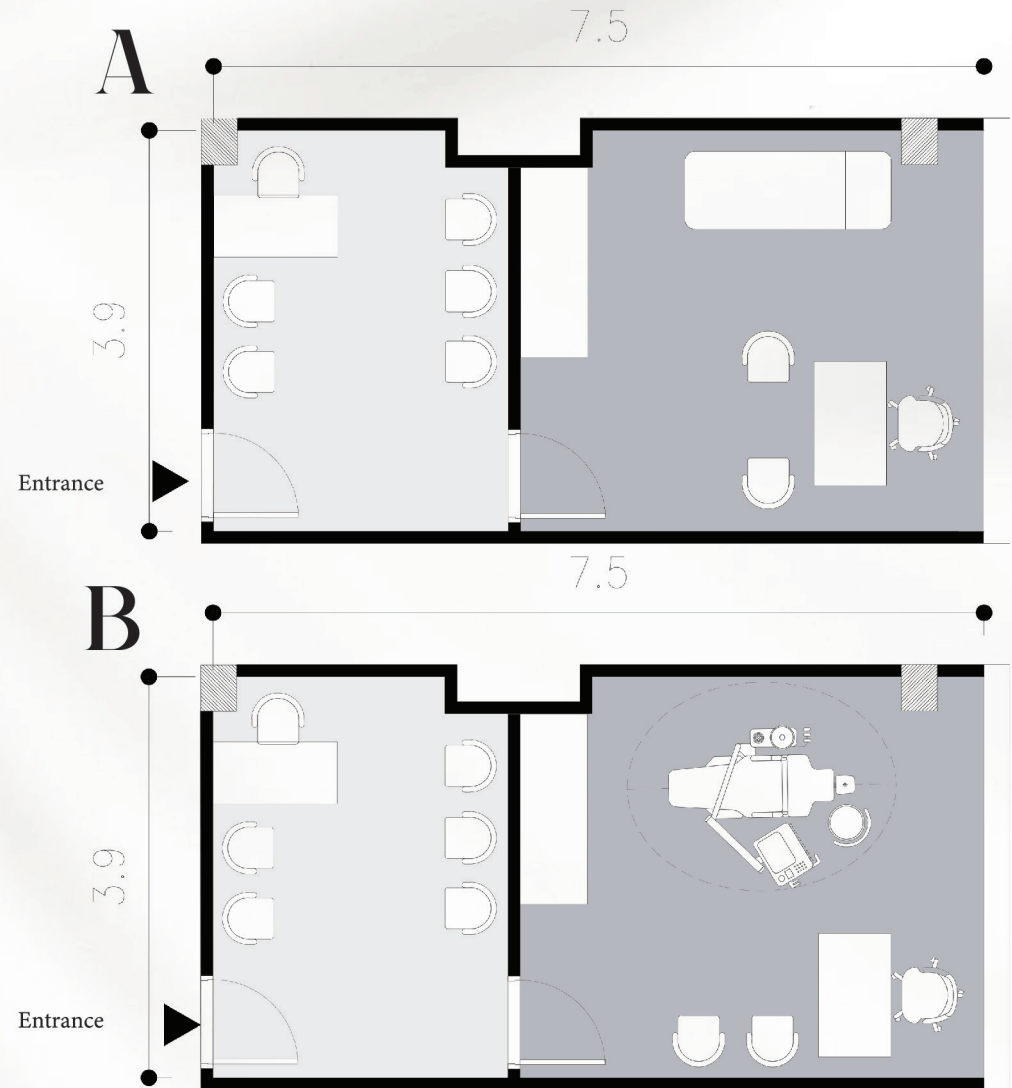
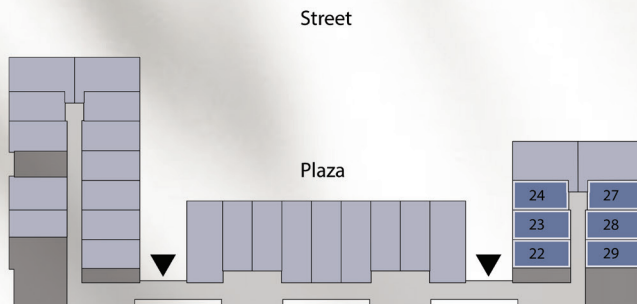
## Disclaimer:

1. All Unit dimensions are measured internally and exclude wall finishes and construction tolerance.
2. All Material, dimensions, drawings and interior designs are approximate and information is subject to change without notice according to the consultant's vision.
3. Actual area may vary from the stated area within 5% margin.
4. Drawings are not to scale.
5. The developer reserves the right to make revisions, add additional floors, change elevation details.
6. The unit orientation is shown in the floor plan.

# Terrace Clinics

Units :  
122-123-124-127-128-129-222  
-223-224-227-228-229

Area = 43 m<sup>2</sup> - 44 m<sup>2</sup>



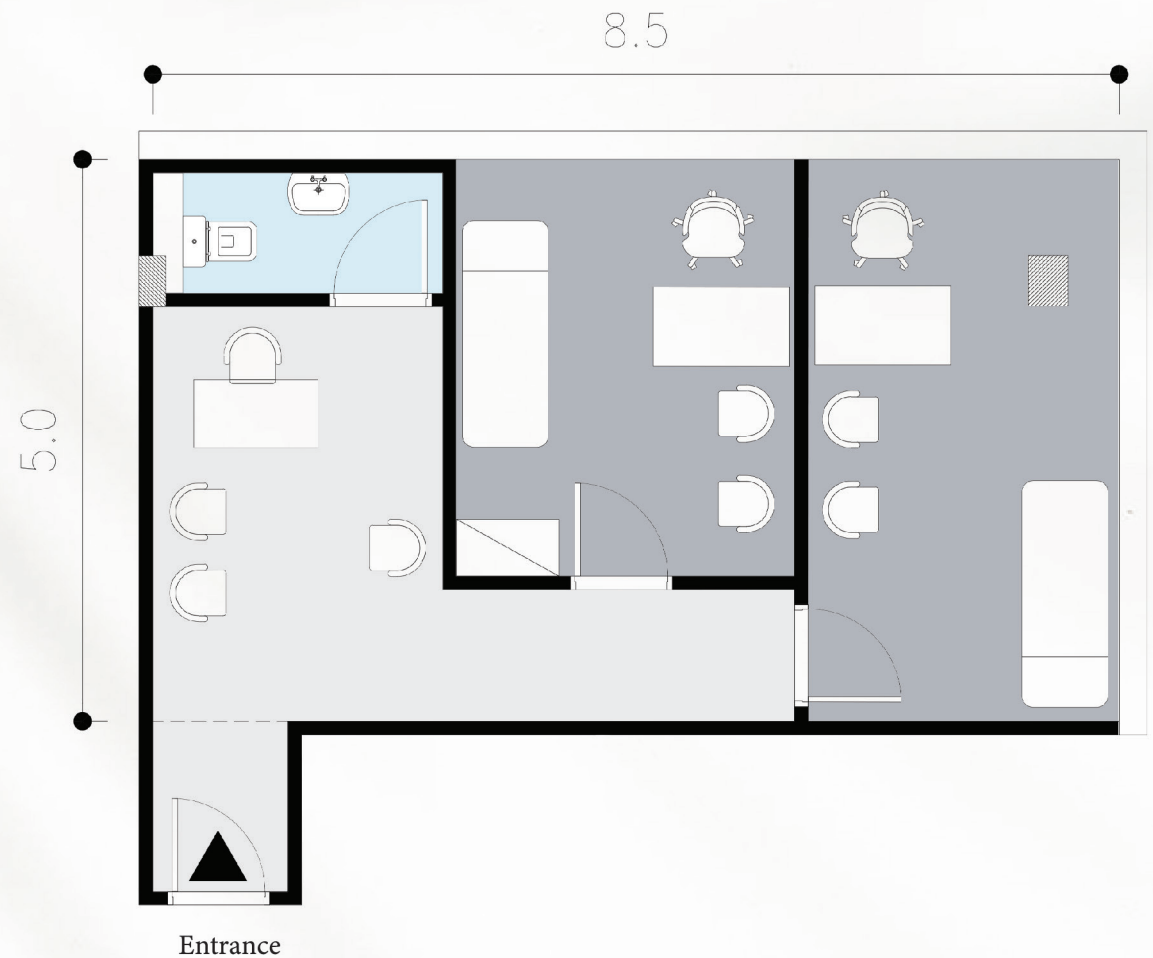
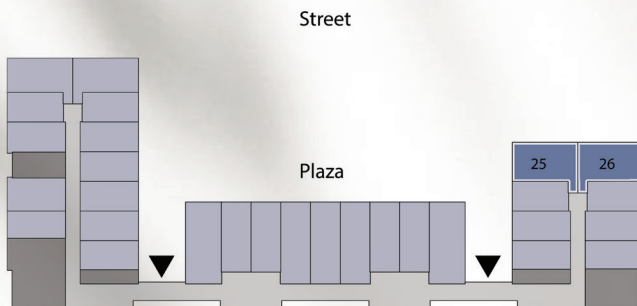
## Disclaimer:

1. All Unit dimensions are measured internally and exclude wall finishes and construction tolerance.
2. All Material, dimensions, drawings and interior designs are approximate and information is subject to change without notice according to the consultant's vision.
3. Actual area may vary from the stated area within 5% margin.
4. Drawings are not to scale.
5. The developer reserves the right to make revisions, add additional floors, change elevation details.
6. The unit orientation is shown in the floor plan.

# Terrace Clinics

Units :  
125-126-225-226

Area = 68 m<sup>2</sup>



## Disclaimer:

1. All Unit dimensions are measured internally and exclude wall finishes and construction tolerance.
2. All Material, dimensions, drawings and interior designs are approximate and information is subject to change without notice according to the consultant's vision.
3. Actual area may vary from the stated area within 5% margin.
4. Drawings are not to scale.
5. The developer reserves the right to make revisions, add additional floors, change elevation details.
6. The unit orientation is shown in the floor plan.

# Terrace *Clinics*



Unique location



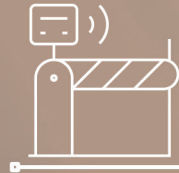
Fully finished Clinics



Units overlooking  
main road



2 floors under  
ground parking



Different Accesses  
2 gates in 2 level



Maintenance  
for service area



Luxury entrance



Garbage chute



Security cameras

# Thank *You*

 [www.hdp.com.eg](http://www.hdp.com.eg)

 Twelve Bl- 5th floor- Bl-5- 01, Sheikh Zayed City